

DAP-CAU  
TONKIN

The post office at Dap-Cau operated during 1885-1946. One of its earliest postmarks was a type D1 device, which was in service for nearly two decades.



POSTMARK TYPE: D1  
PERIOD OF USE: 1886-1904



POSTAL MARKINGS  
DAP-CAU TONKIN 1 SEPT 93  
TONKIN CORPS EXPEDITRE  
REVERSE  
HAI-PHONG TONKIN 2 SEPT.93

## DAPCAU TONKIN

Dapcau's type E1(ch) postmark used numerals to express the month. The first reported year of use for this postmark was 1914.



POSTMARK TYPE: E1(ch)  
PERIOD OF USE: 1914-21



POSTAL MARKINGS  
DAPCAU TONKIN 4-4 14  
REVERSE  
HAIPHONG TONKIN 4-4 14

DAP-CAU  
TONKIN

Throughout World War I, the Dapcau post office used its type E1(ch) device to process mail. The last reported year of use for this postmark was 1921.



POSTMARK TYPE: E1(ch)  
PERIOD OF USE: 1914-21



POSTAL MARKINGS  
DAP-CAU TONKIN 21-2 21  
REVERSE  
LIMOUX AUDE 19-4 21



DAP-CAU  
TONKIN

The last postmark for Dapcau was the type G device with the hyphenated "DAP-CAU" spelling.



POSTMARK TYPE: G  
PERIOD OF USE: 1923-45



POSTAL MARKINGS

DAP-CAU TONKIN 14-1 38

REVERSE

HANOI R.P. TONKIN 14-1 38

MARSEILLE-GARE-AVION B~~CHES~~ DU RHONE 22 • I 1938



## DAPCAU TONKIN

Dapcau's type E2 postmark was the first that used the non-hyphenated "DAPCAU" spelling. This postmark was in service for over 35 years.



POSTMARK TYPE: E2  
PERIOD OF USE: 1893-28



POSTAL MARKINGS  
DAPCAU TONKIN 12 MARS 09  
REVERSE  
PHU-LANG-THUONG TONKIN 13 MARS 09

DAPCAU  
TONKIN

While Dapcau had many postmarks, the type G variety with the non-hyphenated "DAPCAU" spelling is only known from the year 1936.



POSTMARK TYPE: G  
PERIOD OF USE: 1936



POSTAL MARKINGS

DAPCAU TONKIN 28-3 36

REVERSE

HANOI R.P. TONKIN 28-3 36

MARSEILLE-GARE-AVION B<sup>CHES</sup> DU RHONE 5 • IV 1936

CORGOLOIN COTE D'OR 6-4 36

POSTMARK TYPE: G  
PERIOD OF USE: 1926-44



THAI-BINH TONKIN 22-8 31  
MARSEILLE ARRIVE B<sup>CHES</sup> DU RHONE 6 • IX 1931



## DIEN-BIEN-PHU TONKIN

The first postmark for Dien-Bien-Phu was a type E2 device. It remained in service for over two decades.



POSTMARK TYPE: E2  
PERIOD OF USE: 1896-1918

POSTAL MARKINGS  
DIEN-BIEN-PHU TONKIN 2 NOV. 08

DIEN-BIEN-PHU  
TONKIN

Type G was the last postmark style used at Dien Bien Phu. This example is the latest known use of the postmark.



POSTMARK TYPE: G  
PERIOD OF USE: 1929-38



POSTAL MARKINGS

DIEN-BIEN-PHU TONKIN 30-5 38

handmade airmail label

framed "Hanoi-Marseille" routing instruction

REVERSE

HANOI R.P. TONKIN 3-6 38

PARIS AVIATION SCE ETRANGER 10 • VI 1938



DIENBIENPHU  
TONKIN

The only postmark that ever used the non-hyphenated "DIENBIENPHU" spelling was a type E2 device. It was in service for only five years fading out in 1928.



POSTMARK TYPE: E2  
PERIOD OF USE: 1923-28

POSTAL MARKINGS  
DIEN-BIEN-PHU TONKIN 2 OCT. 28  
framed R with registration label

REVERSE

SONLA TONKIN 8-10 28  
HANOI TONKIN 15-10 28



## DINH-LAP TONKIN

The post office operated from 1909 until after World War II closing in 1946. Dinh-Lap's first recorded postmark was the type D1 design. Here a picture postcard that originated at the military post at Dinh-Lap was processed through the civilian postal system.



POSTMARK TYPE: D1  
PERIOD OF USE: 1915-21



POSTAL MARKINGS  
DINH-LAP TONKIN 4 SEPT. 16

DINH-LAP  
TONKIN

Dinh-Lap used the type G postmark from 1929 to 1937. No other postmark is recorded from the town before the post office closed in 1946.



POSTMARK TYPE: G  
PERIOD OF USE: 1929-37



POSTAL MARKINGS  
DINH-LAP TONKIN 15-12 36  
REVERSE  
LANG-SON TONKIN 17-12 36  
HANOI R.P. TONKIN 17-12 36

DINH-LAP  
TONKIN

The Dinh-Lap post office closed in 1946. The last recorded postmark style for Dinh-Lap was in the type G format. The latest known use of the type G postmark is from 1938.



POSTMARK TYPE: G  
PERIOD OF USE: 1929-38



POSTAL MARKINGS  
DINH-LAP TONKIN 19-7 38  
REVERSE  
LANG-SON TONKIN 21-7 38  
HANOI R.P. TONKIN 21-7 38  
TOULON S/ MER VAR 15 • VIII 1938



## DONG-DANG TONKIN

The post office at Dong-Dang operated during two periods: 1886-1891 and 1896-1946. The type D2 postmark bridged the two periods. It was ultimately replaced by a type E2 postmark.



POSTMARK TYPE: D2  
PERIOD OF USE: 1889-1904



### POSTAL MARKINGS

CORPS EXP<sup>RE</sup> TONKIN  
DONG-DANG TONKIN 10 JUIN 99

### REVERSE

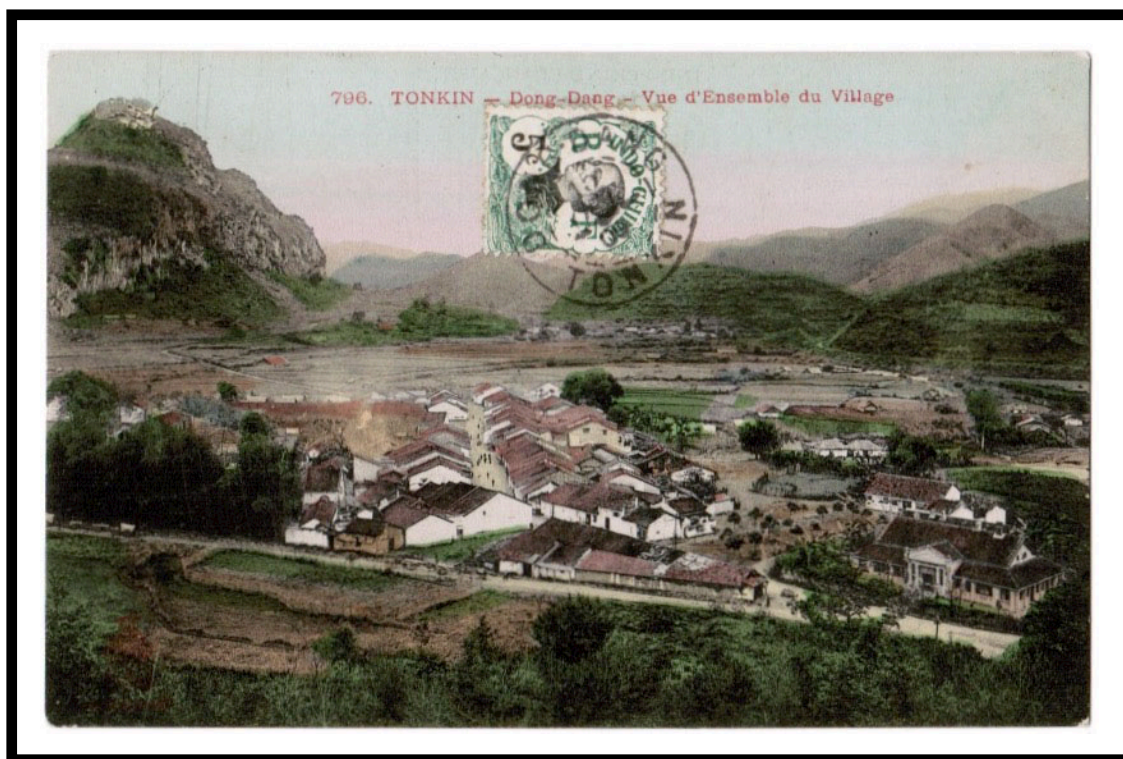
LANG-SON TONKIN 11 JUON 99  
HAIPHONG TONKIN 12 JUIN 99  
PARIS 54 BATIGNOLES 17 JUIL 99

## DONG-DANG TONKIN

The Dong-Dang post office operated during the periods 1886-1891 and 1896-1946. The Dong-Dang post office kept the E2 postmark in service for two decades.



POSTMARK TYPE: E2  
PERIOD OF USE: 1905-26



POSTAL MARKINGS  
DONG-DANG TONKIN 15 OCT 09  
REVERSE  
LAM TONKIN 17 OCT 09

## DONG-DANG TONKIN

Dong-Dang's last reported postmark was a type G device. The type G postmark was in service for a decade and a half, until the start of World War II.



POSTMARK TYPE: G  
PERIOD OF USE: 1925-39



POSTAL MARKINGS  
DONG-DANG TONKIN 1-12 30  
slogan handstamp



# DONG-KHE TONKIN

When it first opened in 1897, the post office at Dong-Khe employed the type D1 postmark. Here the postmark was applied to a letter from the army post at Na-Lam when it was transferred from the military postal system to the civilian postal system.



POSTMARK TYPE: D1  
PERIOD OF USE: 1897-09



POSTAL MARKINGS  
CORPS EXP<sup>RE</sup> TONKIN  
DONG-DANG TONKIN 31 JANV 04

REVERSE

THATKHE TONKIN 1 FEVR 04  
HAIPHONG TONKIN 3 FEVR 04  
CHAUDERAY SAONE ET LOIRE 9 MARS 04

## DONG-KHE TONKIN

Dong-Khe's post office began using the type D1 postmark when it opened in 1897 and the postmark remained in service for over a decade. This example from 1909 is the latest known use of Dong-Khe's type D1 postmark.



POSTMARK TYPE: D1  
PERIOD OF USE: 1897-09

POSTAL MARKINGS  
DONG-KHE TONKIN 25 MAI 09  
REVERSE  
TA-LUNG TONKIN 25 MAI 09

# DONG-KHE TONKIN

The second and final circular date stamp for the Dong-Khe post office was a type G device. The Dong-Khe post office closed in 1946.



POSTMARK TYPE: G  
PERIOD OF USE: 1929-37



## POSTAL MARKINGS

DONG-KHE TONKIN 28-3 34  
framed Saigon-Marseille routing instruction

## REVERSE

HANOI R.P. TONKIN 28-3 34  
SAVIGNY S/ ORGE SEINE ET OISE 16-4 34



DONGKHE  
TONKIN

The only postmark that employed the non-hyphenated spelling "DONGKHE," was in the type E2 format. It remained in service for a decade and a half.



POSTMARK TYPE: E2  
PERIOD OF USE: 1913-28



POSTAL MARKINGS  
DONGKHE TONKIN 28 JANV 24  
REVERSE  
THATKHE TONKIN 28 JANV 24  
HANOI TONKIN 29-1 24

# DONGKHE TONKIN

Previously, it was believed that 1923 was the first year of use for the type E2 postmark. This example from 1913 is the earliest known use of Dongkhe's E2 postmark.



POSTMARK TYPE: E2  
PERIOD OF USE: 1913-28



POSTAL MARKINGS  
DONGKHE TONKIN 24 SEPT. 13  
REVERSE  
DONGKHE TONKIN 24 SEPT. 13

DONG-MO  
TONKIN

The Thanh-Moi post office transferred to Dong-Mo on 16 September 1927 and operated there through World War II. The only known postmark from Dong-Mo is the type G format.



POSTMARK TYPE: G  
PERIOD OF USE: 1927-38



POSTAL MARKINGS

DONG-MO TONKIN 3-4 33  
expedited service label  
airmail route handstamp

REVERSE

HANOI R.P. TONKIN 3-4 33  
MARSEILLE-GARE-AVION BCHES DU RHONE 17 • IV 1933  
PARIS I RUE DE HIPPOLYTE LEBAS 18 • IV 1933



## DONG-TRIEU TONKIN

Dong-Trieu's post office began operations in 1893. This early example from the first year of use was struck with blue ink (as was usual in the beginning years) and without the central date plug.



POSTMARK TYPE: E2  
PERIOD OF USE: 1893-1921



POSTAL MARKINGS  
DONG-TRIEU TONKIN  
REVERSE

BELFORT- F<sup>o</sup> DE FRANCE T<sup>ri</sup> DE BELFORT 30 MARS 97

# DONG-TRIEU TONKIN

Starting out as a military telegraph station, Dong-Trieu's post office operated from 1893 to 1946. Dong-Trieu's first postmark was a type E2 design. This cancellation was in use for almost three decades.



POSTMARK TYPE: E2  
PERIOD OF USE: 1893-1921



POSTAL MARKINGS  
DONG-TRIEU TONKIN 7 JUL 20  
REVERSE  
HAIPHONG TONKIN 8-7 20



DONG-TRIEU  
TONKIN

Famous for its anthracite coal, Dong-Trieu utilized a type G postmark as its second and final postmark. The first year of Dong-Trieu's type G postmark was 1923.



POSTMARK TYPE: G  
PERIOD OF USE: 1923-40



POSTAL MARKINGS  
DONG-TRIEU TONKIN 4-10 23  
REVERSE  
HAIPHONG TONKIN 5-12 23



DO-SON  
TONKIN

Do-Son's post office began operations in 1890. Its first postmark was a D2 device, which was the only one that ever used the hyphenated "DO-SON" spelling. Here the Do-Son postmark was applied as a transit marking of Expeditionary Corps mail that was subsequently processed through the military post office at Hai-Phong.



POSTMARK TYPE: D2  
PERIOD OF USE: 1892-1920



POSTAL MARKINGS  
DO-SON TONKIN 7 JUIL. 93  
CORR.D. ARMEES HAI-PHONG 8 JUIL. 93  
REVERSE  
HAI-PHONG TONKIN 8 JUIL. 93

DOSON  
TONKIN

When it first appeared, the type D2 postmark employed the hyphenated "DO-SON" spelling. Over time, the hyphen was eliminated so that later examples exhibit the non-hyphenated "DOSON" variation.



POSTMARK TYPE: D2  
PERIOD OF USE: 1892-1920



POSTAL MARKINGS

DOSON TONKIN 27 SEPT. 08  
PEZENAS HERAULT 30-10 08

DOSON  
TONKIN

In 1913, the post office at Doson began using the type E2 postmark with the month designated by a numeral. The postmark remained in service for over a decade.



POSTMARK TYPE: E2(ch)  
PERIOD OF USE: 1913-27



POSTAL MARKINGS  
DOSON TONKIN 8-9 23  
REVERSE  
HAIPHONG TONKIN 8-9 23



DOSON  
TONKIN

The inner circle of Doson's type E3 postmark was made up of 21 dashes. This postmark was in service during the 1930s.



POSTMARK TYPE: E3  
PERIOD OF USE: 1932-36



POSTAL MARKINGS

DOSON TONKIN 30 DEC 35  
registration label

REVERSE

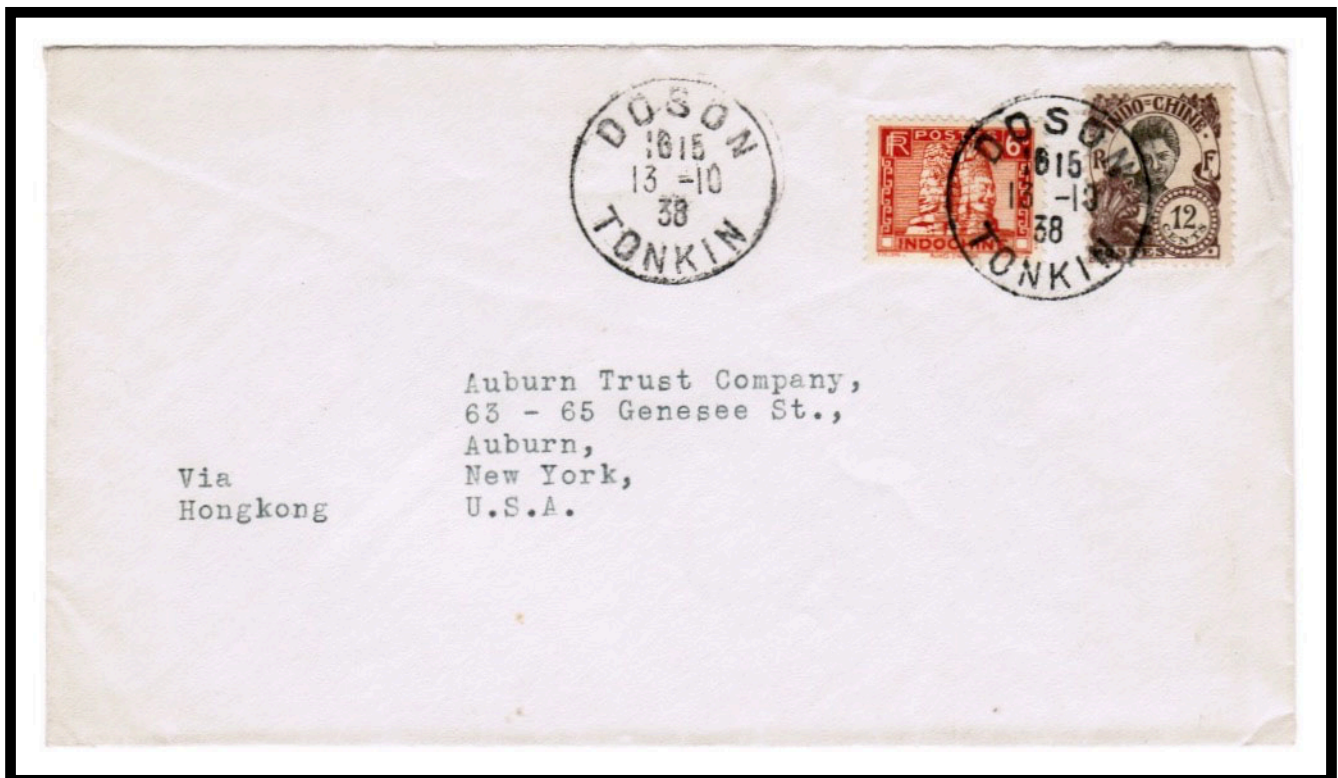
HAI-PHONG TONKIN 30-12 35  
SAIGON-CENTRAL COCHINCHINE 3-1 35  
PNOMPENH CAMBODGE 4-1 35

DOSON  
TONKIN

Doson's final postmark was a type G device that was notable for the large size of its lettering.



POSTMARK TYPE: G  
PERIOD OF USE: 1927-44



POSTAL MARKINGS  
DOSON TONKIN 13-10 38  
REVERSE  
HAIPHONG TONKIN 13-10 38

## DONG-VAN TONKIN

Franked with a 10-centime Cameo Sower stamp overprinted "FM" for "Franchise Militaire," this letter was posted from Dong-Van to Paris in 1930. Dong-Van was an upland district of Ha-Giang Province. Originally introduced in 1908, the last year of use of the E2 postmark variety was 1930.



POSTMARK TYPE: E2  
PERIOD OF USE: 1908-30



POSTAL MARKINGS  
DONG-VAN TONKIN 2 SEPT 30  
REVERSE  
BAO-LAC TONKIN 4-9 30  
CAO-BANG TONKIN 7-9 30  
HAI-PHONG TONKIN 9-7 30



## DONG-VAN TONKIN

The last postmark recoded for the secondary post office at Dong Van was a type G device. It was in service for a decade and a half.



POSTMARK TYPE: G  
PERIOD OF USE: 1925-40



### POSTAL MARKINGS

DONG-VAN TONKIN 26-12 35  
airmail label

### REVERSE

HA-GIANG TONKIN 28-12 35  
PARIS AVION 13 • I 1936  
PARIS VII RUE CLER 13 • I 1936

GIA-LAM  
TONKIN

The Gia-Lam post office opened on 12 May 1922. Its first postmark was a type G1 device. That remained in service for over two decades.



POSTMARK TYPE: G1  
PERIOD OF USE: 1923-44



POSTAL MARKINGS  
GIA-LAM TONKIN 27-12 35  
airmail label  
REVERSE  
HA-NOI R.P. TONKIN 27-12 35  
COURREVOIE SEINE 6 JANV 36

## GIA LAM NORD VIET NAM

The only postmark with a space instead of a hyphen (“GIA LAM” in lieu of “GIA-LAM”) was a type V device. This cover is the only reported example of this postmark.



POSTMARK TYPE: V  
PERIOD OF USE: 1950



POSTAL MARKINGS  
GIA LAM NORD VIET NAM 5-11 1950



## GIA-LAM VIET-NAM

Gia-Lam's last postmark was in the type W2 format. The post office ceased operations in 1954.



POSTMARK TYPE: W2  
PERIOD OF USE: 1951-54



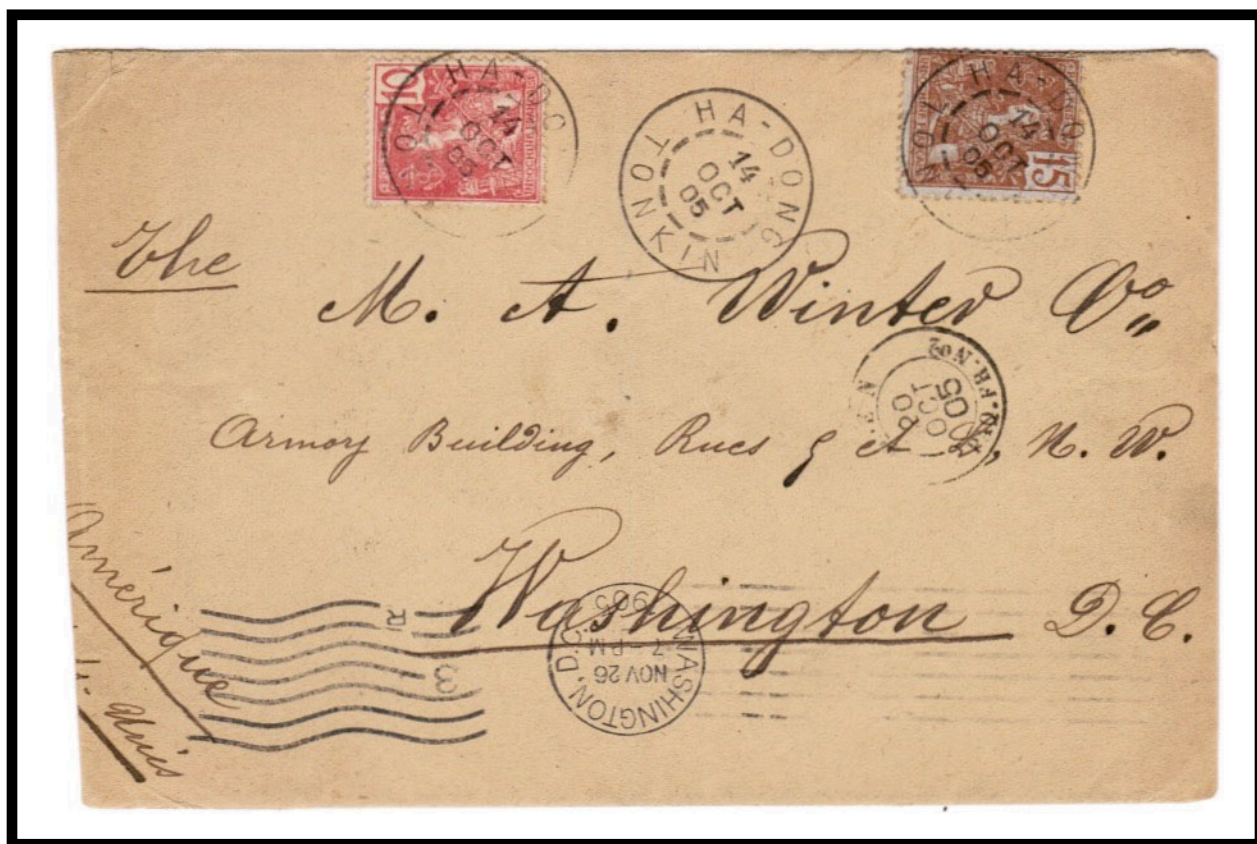
POSTAL MARKINGS  
GIA-LAM VIET-NAM 10-6 1951  
REVERSE  
GIA-LAM VIET-NAM 10-6 1951

HA-DONG  
TONKIN

Transferred from Caudo, the post office at Ha-Dong opened on 15 April 1905. Starting in its first year of operation, Ha-Dong utilized a type E2 device for postmarking the mail.



POSTMARK TYPE: E2  
PERIOD OF USE: 1905-25



POSTAL MARKINGS

HA-DONG TONKIN 14 OCT 05  
LIGNE N PAQ. FR. N° 2 20 OCT 05  
WASHINGTON, D.C. NOV 26 1905

REVERSE

HANOI TONKIN 15 OCT 05  
WASHINGTON, D.C. NOV 26 1905



## HA-DONG TONKIN

The second postmark employed by the Ha-Dong post office was a type G device. Because the code letter "A" was assigned to Tonkin, it appears on the censor's resealing tape.



POSTMARK TYPE: G  
PERIOD OF USE: 1925-44



### POSTAL MARKINGS

HA-DONG TONKIN 3-1 41

registration label

OUVERT PAR L'AUTORITE MILITAIRE football

REVERSE

HANOI R.P. TONKIN 3-1 41

NEW YORK, N.Y. REG'Y DIV. 2-5 1941



## HA-GIANG TONKIN

Opened in 1897, the post office's spelling of "HA-GIANG" appeared in its first postmark, a type D1 device.



POSTMARK TYPE: D1  
PERIOD OF USE: 1899-1911



### POSTAL MARKINGS

HA-GIANG TONKIN 27 NOV 04  
TUYEN-QUANG TONKIN 4 DEC 04

### REVERSE

HANOI TONKIN 6 DEC 04

## HA-GIANG TONKIN

This example of a Ha-Giang postmark from 1923 is over a decade older than the previously latest recorded type D1 postmark.



POSTMARK TYPE: D1(blue)  
PERIOD OF USE: 1898-1923



POSTAL MARKINGS  
HA-GIANG TONKIN 24 MARS 23  
REVERSE  
TUYENQUANG TONKIN 28-3 23  
HANOI TONKIN 29-3 23

HAGIANG  
TONKIN

The first postmark that employed the non-hyphenated spelling "HAGIANG" was a type E2 style.



POSTMARK TYPE: E2  
PERIOD OF USE: 1911-28



POSTAL MARKINGS  
HAGIANG TONKIN 13 OCT 26  
REVERSE  
HANOI TONKIN 19-10 26



HA-GIANG  
TONKIN

The last postmark recorded for Ha-Giang was a type G device with the hyphenated "HA-GIANG" spelling.



POSTMARK TYPE: G  
PERIOD OF USE: 1924-45



POSTAL MARKINGS  
HA-GIANG TONKIN 24-9 36  
REVERSE  
PARIS R.P. AVION 5 • X 1938

HAI-DUONG  
TONKIN

The Hai-Duong post office opened in 1885 but its earliest known postmark is the B1 format from 1886. This example on an Expeditionary Corps letter from August 1886 is missing the year portion of its date plug.



POSTMARK TYPE: B1  
PERIOD OF USE: 1886-1904



POSTAL MARKINGS  
HAI-DUONG TONKIN 25 AOUT (86)  
REVERSE  
CORR. D. ARMEES HAI-PHONG 26 AOUT 86  
PARIS 2 3 OCT. 86

## HAI-DUONG TONKIN

Hai-Duong's type B1 postmark was in service for nearly two decades. This example of a postal card posted in 1906 is the latest known use of the postmark.



POSTMARK TYPE: B1  
PERIOD OF USE: 1886-04



POSTAL MARKINGS  
HAI-DUONG TONKIN 9 AVRIL 06  
REVERSE  
HAIPHONG TONKIN 10 AVRIL 06



HAIDUONG  
TONKIN

The first postmark to employ the non-hyphenated spelling "HAIDUONG" was a type E2 cancellation.



POSTMARK TYPE: E2  
PERIOD OF USE: 1908-24



POSTAL MARKINGS  
HAIDUONG TONKIN 7 FEVR 23  
REVERSE  
HAIPHONG TONKIN 7-2 23

HAIDUONG  
TONKIN

Several variations occurred with Haiduong's type E2 postmark including a thick lettering variant.



POSTMARK TYPE: E2  
PERIOD OF USE: 1908-24



POSTAL MARKINGS  
HAIDUONG TONKIN 7 JUIN 19  
REVERSE  
HAIPHONG TONKIN 7-6 19

## HAIDUONG TONKIN

Another variation that saw service at the Haiduong post office was the unusual type F2 format with separators in the outer ring.



POSTMARK TYPE: F2  
PERIOD OF USE: 1900-14



POSTAL MARKINGS  
HAIDUONG TONKIN 25 JANV 10  
REVERSE  
HANOI TONKIN 27 JANV 10



## HAI-DUONG TONKIN

The hyphenated spelling “HAI-DUONG” reappeared starting in 1924 with a type G device. It remained in service for a quarter of a century.



POSTMARK TYPE: G  
PERIOD OF USE: 1924-48



POSTAL MARKINGS  
HAI-DUONG TONKIN 19-1 40  
registration label  
REVERSE  
HANOI R.P. BIS TONKIN 20-1 40

HAI-DUONG  
TONKIN

Postmarks for the town appeared with both hyphenated and non-hyphenated spellings. This is the only reported example of a hyphenated "HAI-DUONG" in the type G1 format.



POSTMARK TYPE: G1  
PERIOD OF USE: 1932



POSTAL MARKINGS  
HAI-DUONG TONKIN 15-7 32  
registration label

HAI DUONG  
NORD VIETNAM

With this version of Haiduong's postmark, there is a space separating "HAI" and "DUONG." The earliest known use of this variety is 1948.



POSTMARK TYPE: V  
PERIOD OF USE: 1948-51



POSTAL MARKINGS  
HAI DUONG NORD VIETNAM 13-8 1949  
REVERSE  
HANOI R.P. NORD VIETNAM 15-8 1949



HAI-DUONG  
VIET-NAM

The last postmark that used the hyphenated "HAI-DUONG" spelling was a type W2 device. It is only known from a single year, 1951.



POSTMARK TYPE: W2  
PERIOD OF USE: 1951



POSTAL MARKINGS

HAI-DUONG VIET-NAM 8-8 1952  
registration label

REVERSE

HA-NOI VIET-NAM 8-8 1951  
PARIS X DISTRIBUTION 3-8-1951

## HAIDZUONG TONKIN

“Haidzuong” was a spelling variation for “Haiduong.” Only a single postmark, in the type D1 format, ever employed this spelling.



POSTMARK TYPE: D1  
PERIOD OF USE: 1890-1906



### POSTAL MARKINGS

HAIDZUONG TONKIN 13 DEC 02  
HAIPHONG TONKIN 14 DEC 02  
CLAMECY NIEVRE 17-1 03

HAI-NINH  
TONKIN

The post office at Hai-Ninh opened at the beginning of 1888 but was soon moved to Moncay based on an announcement of 18 April 1889. Its only civilian postmark was a provisional type C2 device known from a single year, 1888.



POSTMARK TYPE: C2  
PERIOD OF USE: 1888



POSTAL MARKINGS

CORPS EXP<sup>RE</sup> ANNAM-TONKIN  
HAI-NINH TONKIN 5/3 1888 (partially manuscript)

REVERSE

HAI-PHONG TONKIN 7 MARS ()8  
CORR. D. ARM. LIG. N PAQ. FR. No 5 () MARS 88  
PARIS 8 DISTRIB<sup>ON</sup> 24 AVRIL 88



## HANG-KENH TONKIN

After being served by rural post, a principal post office opened at Hang-Kenh on 1 July 1929. Hang-Kenh's only known postmark was a type G device that was used for a decade and a half.



POSTMARK TYPE: G  
PERIOD OF USE: 1931-46



POSTAL MARKINGS  
HANG-KENH TONKIN 9-7 37  
REVERSE  
HAI-PHONG TONKIN 9-7 37

## HOA-BINH TONKIN

Hoa-Binh's first postmark was a type D1 device that employed lettering much smaller than was typical for postmarks of this style. It was the first to use the hyphenated "HOA-BINH" spelling.



POSTMARK TYPE: D1  
PERIOD OF USE: 1897-1905



POSTAL MARKINGS  
HOA-BINH TONKIN 27 NOV. 98  
REVERSE  
HANOI TONKIN 28 MAI 98

HOABINH  
TONKIN

The type E2 postmark was the first to utilize the non-hyphenated spelling "HOABINH." This postmark was in service for a quarter century.



POSTMARK TYPE: E2  
PERIOD OF USE: 1902-27



POSTAL MARKINGS  
HOABINH TONKIN 2 JANV. 25



HOABINH  
TONKIN

The type E2 postmark was the first to utilize the non-hyphenated spelling  
"HOABINH."



POSTMARK TYPE: E2  
PERIOD OF USE: 1902-27



POSTAL MARKINGS

HOABINH TONKIN 28 NOV. 18  
framed R with manuscript registration number  
framed AR

REVERSE

HANOI TONKIN 28-11 19  
POSTES R.O.M. CONSERVATOIRE 5-2 19

## HOA-BINH TONKIN

Hoa-Bin's type G postmark, in service for two decades, was the last to employ the hyphenated "HOA-BINH" spelling.



POSTMARK TYPE: G  
PERIOD OF USE: 1926-45



POSTAL MARKINGS  
HOA-BINH TONKIN 22-3 39  
REVERSE  
FONTAINEBLEAU SEINE-ET-MARNE 22.IV.39

HOANG-THU-BI  
TONKIN

Hoang-Thu-Bi's post office opened in 1903 and placed its first postmark device, with the type E1 format, into service.



POSTMARK TYPE: E1  
PERIOD OF USE: 1903-28



POSTAL MARKINGS

HOANG-THU-BI TONKIN 28 JANV 07  
TUYEN-QUANG 3 FEVR 07

REVERSE

HOANG-THU-BI TONKIN 28 JANV 07  
BAC-QUANG TONKIN 31 JANV 07

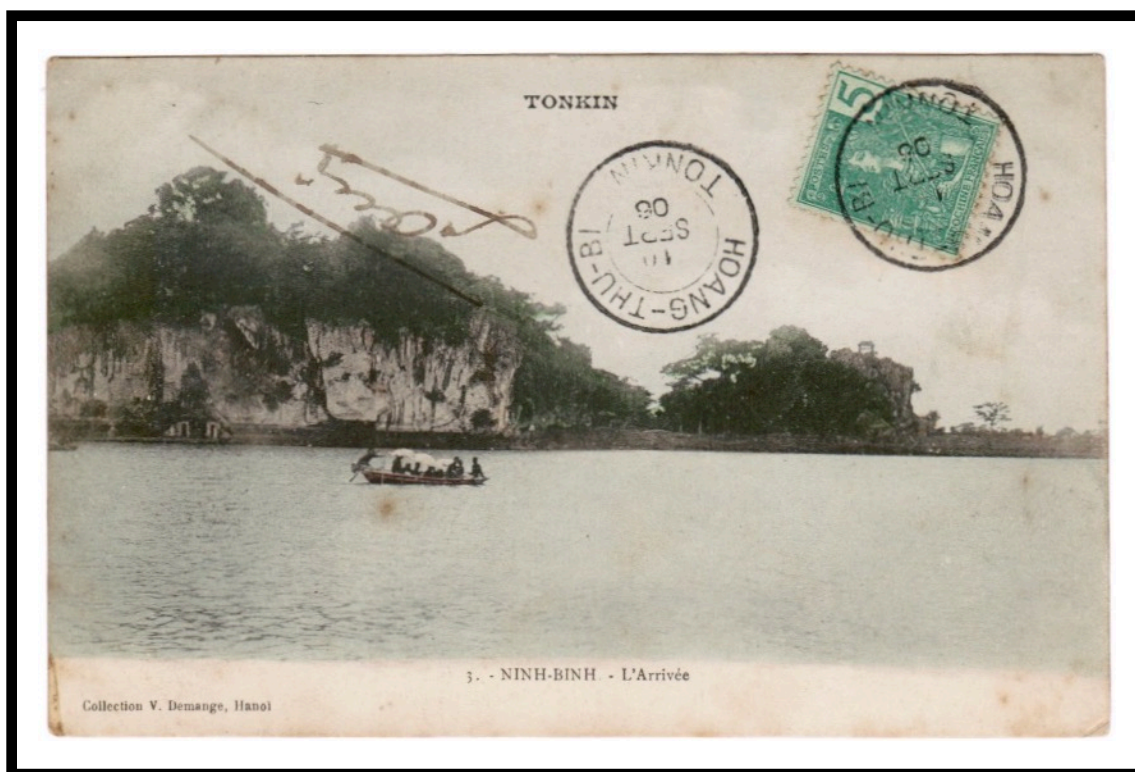


## HOUANG-THU-BI TONKIN

The first and only postmark with the “HOANG-THU-BI” designation was a type E1 device. In 1928, the town’s name was changed to “HOANG-SU-PHI,” presumably a closer phonetic spelling.



POSTMARK TYPE: E1  
PERIOD OF USE: 1903-25



POSTAL MARKINGS  
HOANG-THU-BI TONKIN 10 SEPT 06

HOANG-SU-PHI  
TONKIN

Hoang-Su-Phi became the new name for Hoang-Thu-Bi in 1928. The only postmark that used the new town name was a type G format.



POSTMARK TYPE: G  
PERIOD OF USE: 1929-42



POSTAL MARKINGS

HOANG-SU-PHI TONKIN 15-1 36

REVERSE

BAC-QUANG TONKIN 16-1 36

TUYEN-QUANG TONKIN 18-1 36

HAI-PHONG TONKIN 19-1 39

HOANH-SON  
TONKIN

The only recorded postmark with the hyphenated "HOANH-SON" spelling was a type G device. It remained in service for a decade.



POSTMARK TYPE: G  
PERIOD OF USE: 1929-39



POSTAL MARKINGS  
HOANH-SON TONKIN 7-7 39  
REVERSE  
HAIPHONG TONKIN 7-7 39  
UZES GARD 14-7 39



HOANMO  
TONKIN

The "HOANMO" spelling appeared in a type E2 postmark for only two years. The last year of use was 1927.



POSTMARK TYPE: E2  
PERIOD OF USE: 1926-27



POSTAL MARKINGS

HOANMO TONKIN 12 MAI 27

REVERSE

BINHLIEU TONKIN 12 MAI 27

HAI-PHONG TONKIN 15-5 27

## HONDAU TONKIN

Hondau was a military telegraph office located at a lighthouse. The only postmark known for this office was a type E1 device. The first recorded year of use was 1913.



POSTMARK TYPE: E1  
PERIOD OF USE: 1913-32



POSTAL MARKINGS  
HONDAU TONKIN 20 MAI 13

HON-GAY  
TONKIN

The first postmark to use the hyphenated spelling "HON-GAY" was a type D1 device.



POSTMARK TYPE: D1  
PERIOD OF USE: 1892-1918



POSTAL MARKINGS

HON-GAY TONKIN 10 DEC. 12  
framed R with manuscript registration number

REVERSE

SINGAPORE L 24 DE 1912



HON-GAY  
TONKIN

The Hon-Gay post office employed the seldom seen type E1 postmark during the period 1913-1927. The type G postmark replaced it in 1928.



POSTMARK TYPE: E1  
PERIOD OF USE: 1913-27



POSTAL MARKINGS  
HONGAY TONKIN 11 OCT 23  
REVERSE  
HAIPHONG TONKIN 12-10 23

HONGAY  
TONKIN

The first postmark to use the non-hyphenated "HONGAY" spelling was in the type E2 format.



POSTMARK TYPE: E2  
PERIOD OF USE: 1906-28



POSTAL MARKINGS

HONGAY TONKIN 28 AOUT 18  
framed R with manuscript registration number

REVERSE

HAIPHONG TONKIN 30 AOUT 18



HONGAY  
TONKIN

A type G postmark with the non-hyphenated spelling "HONGAY" was in service for two decades.



POSTMARK TYPE: G  
PERIOD OF USE: 1928-48



POSTAL MARKINGS  
HONGAY TONKIN 13-5 36

REVERSE  
HAI-PHONG TONKIN 14-5 36  
HANOI R.P. TONKIN 14-5 36  
SAINT-LOUIS HAUT RHIN 25-5 36



HONGAY  
TONKIN

By the final year of its use, 1948, the lettering in the type G postmark had become significantly larger.



POSTMARK TYPE: G  
PERIOD OF USE: 1928-48



POSTAL MARKINGS  
HONGAY TONKIN 17-1 48  
REVERSE  
HAIPHONG TONKIN 19-1 48

HON-GAY  
TONKIN

The hyphenated version ("HON-GAY") of the type G postmark saw service for only two years as compared to 20 years for the non-hyphenated variety.



POSTMARK TYPE: G  
PERIOD OF USE: 1929-30



POSTAL MARKINGS

HON-GAY TONKIN 19-5 30  
registration label

REVERSE

HAI-PHONG TONKIN 20-5 30  
BROOKLYN N.Y. REG'Y DIV. JUN 18 1930



HON GAY  
TONKIN

The only postmark that used the spelling with a space in the town's name, "HON GAY," was the type V device.



POSTMARK TYPE: V  
PERIOD OF USE: 1949-50



POSTAL MARKINGS

HON GAY TONKIN 27-8 1949  
PARIS – XVI AVENUE 5 SEPT 49

REVERSE

HAIPHONG NORD VIETNAM 29-8 49



HON-GAY  
VIET-NAM

This is the first known example of the type W2 postmark with the hyphenated spelling "HON-GAY."



POSTMARK TYPE: W2  
PERIOD OF USE: 1951



POSTAL MARKINGS  
HON-GAY VIET-NAM 17-9 1951  
REVERSE  
HAI-PHONG VIET-NAM 18-9 1951

## HUNG-HOA TONKIN

The French occupied Hung-Hoa on 12 April 1884. Its post office post office opened in January 1885. Although the year portion of the date plug is empty, this example is the earliest known mailing from Hung-Hoa.



POSTMARK TYPE: B1  
PERIOD OF USE: 1885



### POSTAL MARKINGS

HUNG-HOA TONKIN 18 JANV. (85) (blue)

### REVERSE

SON-TAY TONKIN 19 JANV. 85

CORR. D. ARMEES HA-NOI 21 JANV. 85

PARIS A CHERBOURG C 11 MARS 85

# HONG-HOA TONKIN

The first postmark put into service with the "HONG-HOA" spelling was a type D1 device with its continuous inner circle. This postmark was in service for nearly four decades.



POSTMARK TYPE: D1  
PERIOD OF USE: 1888-1926



POSTAL MARKINGS  
HONG-HOA TONKIN 6 AOUT 11  
REVERSE  
PHU-THO TONKIN 5 AOUT 11



HONG-HOA  
TONKIN

Used concurrently with the type D1 device was the type D2 cancellation with its characteristic dashed inner circle.



POSTMARK TYPE: D2  
PERIOD OF USE: 1902-26



POSTAL MARKINGS  
HONG-HOA TONKIN 8 AVRIL 10  
REVERSE  
HANOI TONKIN 9 AVRIL 10

## HUNG-HOA TONKIN

Over time, the "HONG-HOA" spelling was discarded in favor of the "HUNG-HOA" spelling. The last postmark that employed the "HUNG-HOA" alternative was in the type G format.



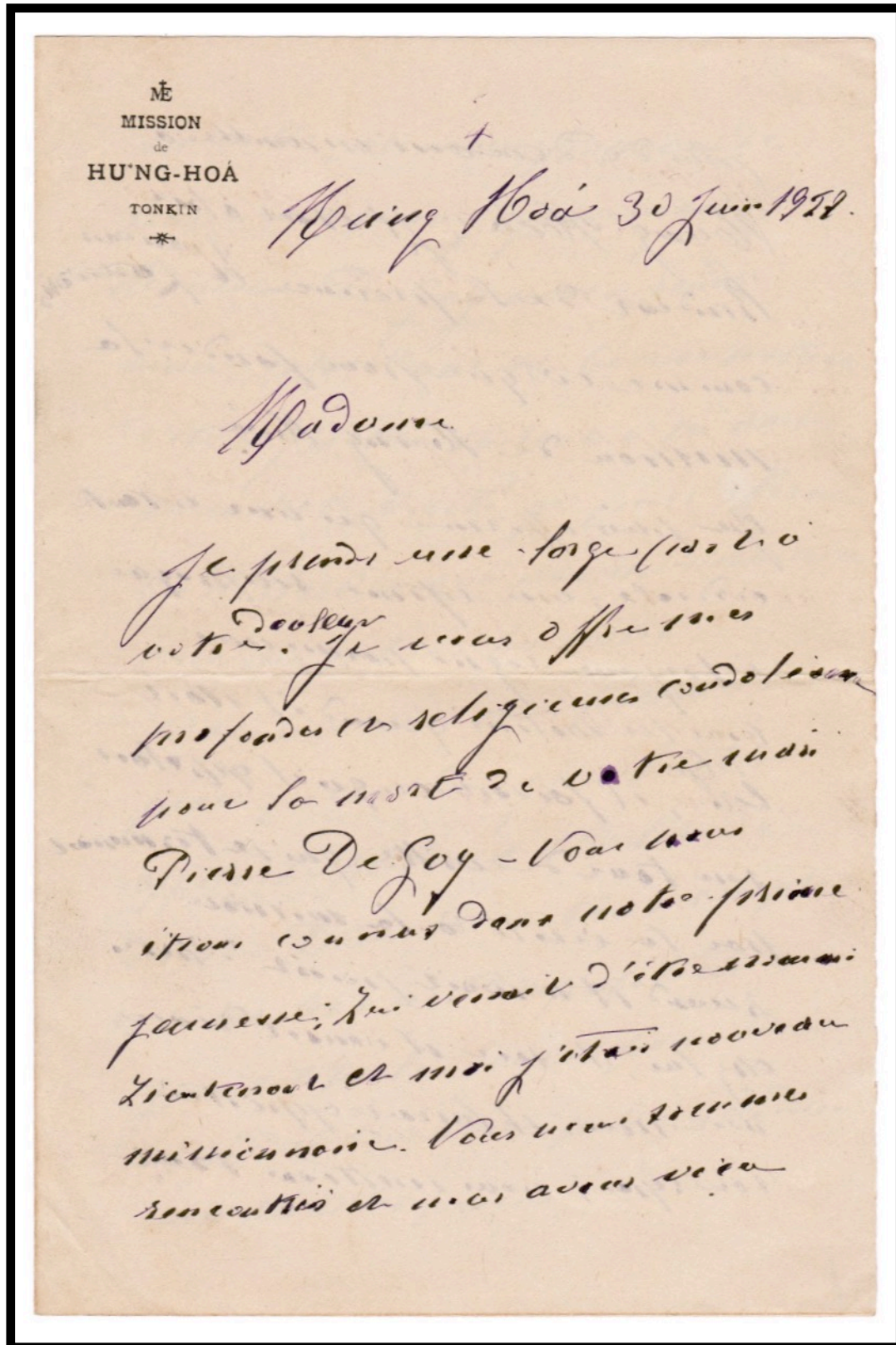
POSTMARK TYPE: G  
PERIOD OF USE: 1927-43

POSTAL MARKINGS  
HUNG-HOA TONKIN 30-6 28  
REVERSE  
HANOI R. P. TONKIN 1-7 28  
ST MAITIN L'ECOLE SEVRES 6-8 28



HUNG-HOA  
TONKIN

The local spelling is given as "HU'NG-HOA" on this stationery for missionaries located there.



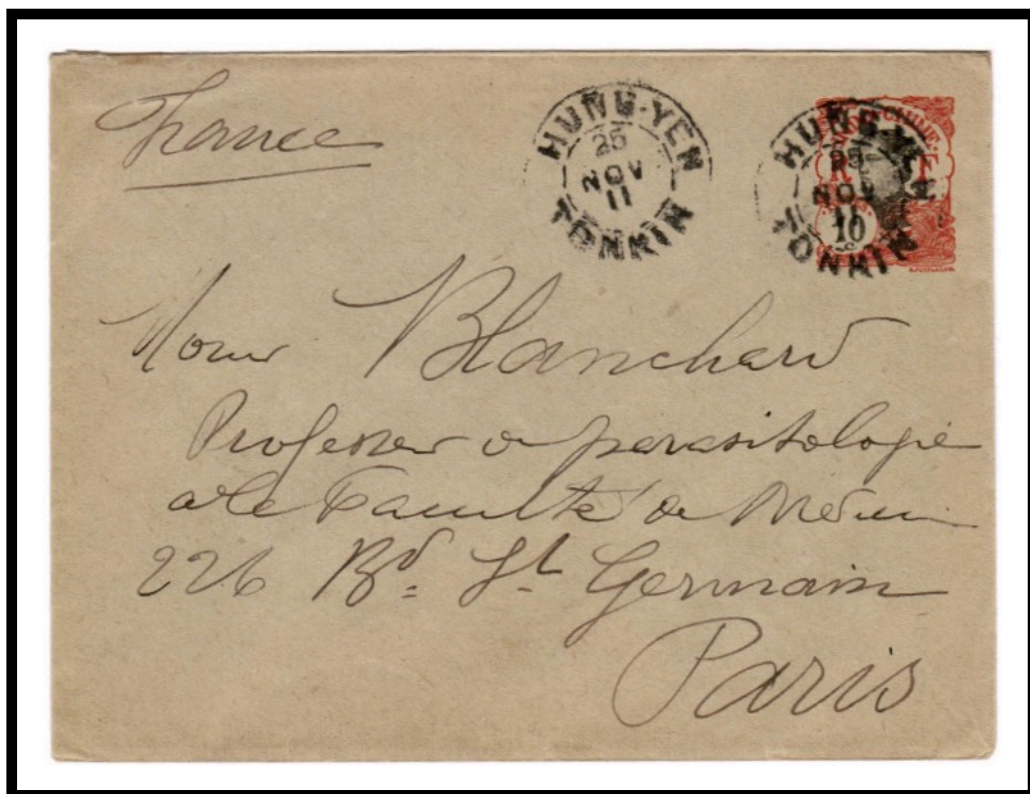


HUNG-YEN  
TONKIN

The type E2 postmark employed only the hyphenated spelling "HUNG-YEN."



POSTMARK TYPE: E2  
PERIOD OF USE: 1898-1920



POSTAL MARKINGS  
HUNG-YEN TONKIN 25 NOV 11  
REVERSE  
HAIPHONG TONKIN 27 NOV 11

HUNG-YEN  
TONKIN

A short-lived variation of the type E2 postmark indicated the month by a numeral instead of an abbreviation for the name of the month.



POSTMARK TYPE: E2(ch)  
PERIOD OF USE: 1914



POSTAL MARKINGS  
HUNG-YEN TONKIN 25-6 14  
REVERSE  
HANOI TONKIN 26-6 14  
HAIPHONG TONKIN 26-6 14

HUNGYEN  
TONKIN

A variation of the type E3 postmark designated the month with a numeral as opposed to an abbreviation.



POSTMARK TYPE: E3(ch)  
PERIOD OF USE: 1916-24



POSTAL MARKINGS  
HUNG-YEN TONKIN 24-4 1923  
REVERSE  
HA NOI TONKIN 25-4 23



HUNG-YEN  
TONKIN

The last postmark applied by the Hung-Yen post office was a type G cancellation.



POSTMARK TYPE: G  
PERIOD OF USE: 1925-43



POSTAL MARKINGS

HUNG-YEN TONKIN 17-3 39

REVERSE

HANOI R.P. TONKIN 17-3 39

MARSEILLE-GARE BOCHES DU AVION 24 • III 1939

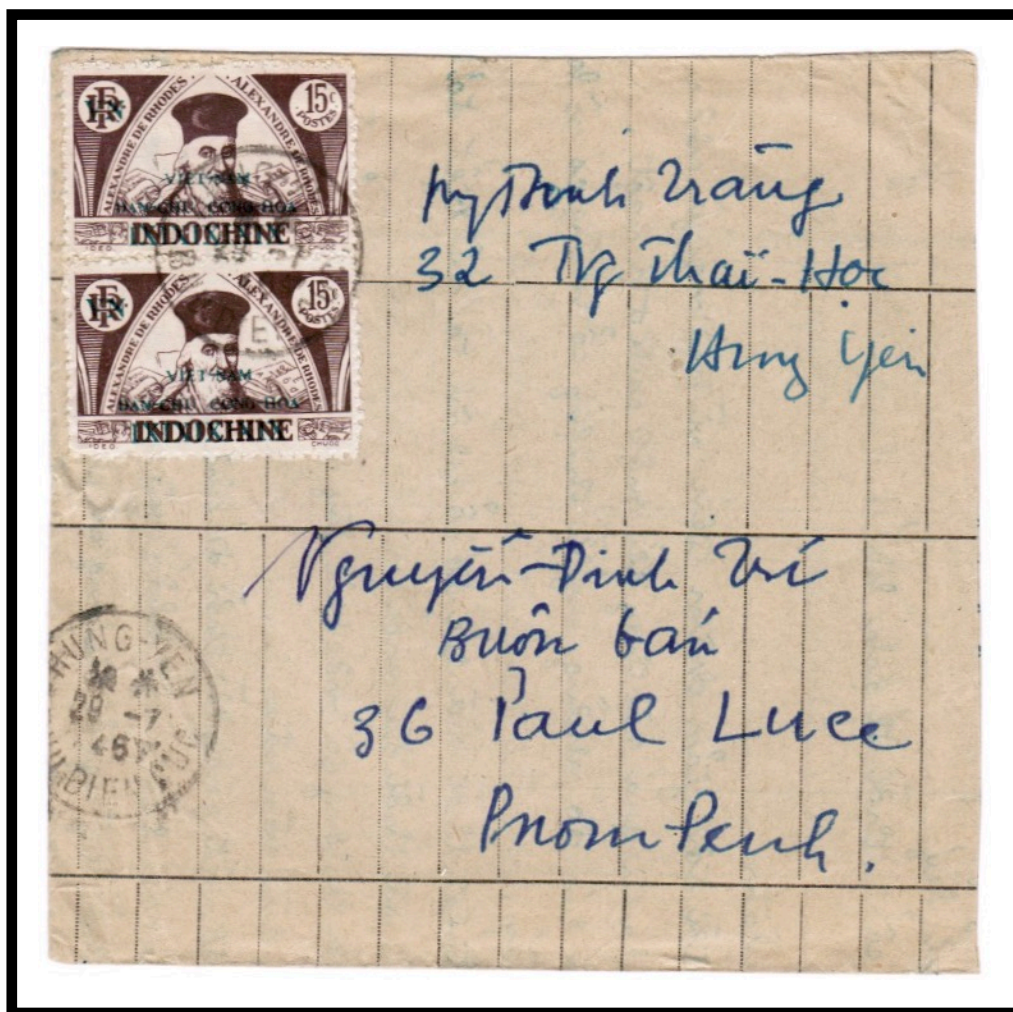
BOOS SEINE INFRE 26-3 39

HUNG-YEN  
BUU-DIEN-CUC

Vietnamese postmarks replaced French text with Vietnamese text. This cover from Hung-Yen to Phnompenh was fabricated from lined notepaper and is an example of an adversity cover.



MARKING TYPE: VN1  
PERIOD OF USE: 1945-46



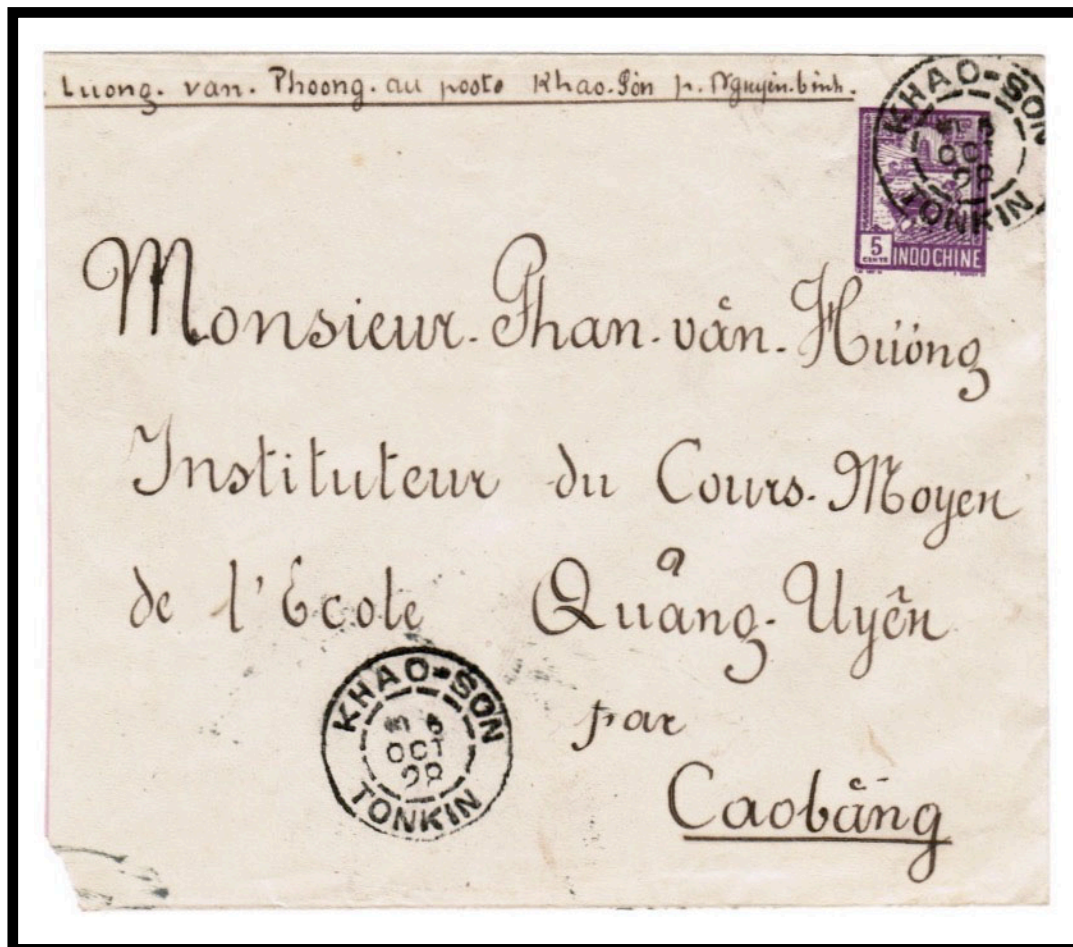
POSTAL MARKINGS  
HUNG-YEN BUU-DIEN-CUC 29-1 46  
REVERSE  
HANOI CHANH-THAU-CUC BUU-TIN 30-1 46

## KHAO-SON TONKIN

Khao-Son's type E2 postmark has only 11 dashes making up the inner circle. The postmark's last year of use was 1928.



POSTMARK TYPE: E2(11t)  
PERIOD OF USE: 1911-28



POSTAL MARKINGS  
KHAO-SON TONKIN 6 OCT 28  
REVERSE  
QUANG-UYEN 7 OCT 28  
CAOBANG TONKIN 8-10 28



## KHAO-SON TONKIN

The last of Khao-Son's postmarks was a type G device. It remained in serviced for a decade and a half. The post office closed in 1946.



POSTMARK TYPE: G  
PERIOD OF USE: 1929-44



### POSTAL MARKINGS

KHAO-SON TONKIN 18-9 38

### REVERSE

CAO-BANG TONKIN 16-8 38

HANOI R.P. TONKIN 17-8 38

VESOUL HAUTE SAONE 26-8 38

KIEN-AN  
TONKIN

The Kien-An post office was established in 1905 as a result of a transfer of the post office from Phulien. Its first postmark was a type E1 style that remained in use for two decades.



POSTMARK TYPE: E1  
PERIOD OF USE: 1905-24



POSTAL MARKINGS

KIEN-AN TONKIN 25 JUL 08  
CHATELINEAU 28 AOUT 1908

REVERSE

KIEN-AN TONKIN 25 JUL 08

KIEN-AN  
TONKIN

The second and final postmark employed by Kien-An was in the type G format.



POSTMARK TYPE: G  
PERIOD OF USE: 1927-44



POSTAL MARKINGS

KIEN-AN TONKIN 19-5-27  
framed R with manuscript registration number

REVERSE

HAIPHONG TONKIN 20 MAI 27  
LUZERN 2 BRIEFAUSGABE 26.VI.27